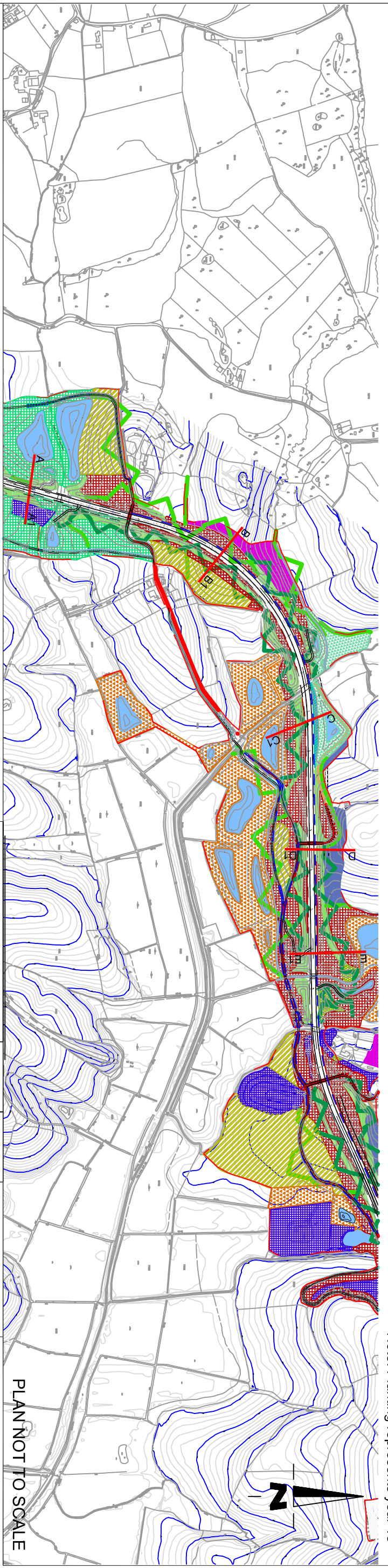


E1 <CHAINAGE 3832>



Note: Planting represents year 15

This map is reproduced from Ordnance Survey material with the permission of Ordnance Survey on behalf of the Controller of Her Majesty's Stationary Office © Crown copyright. Unauthorised reproduction infringes Crown copyright and may lead to prosecution or civil proceedings. 100035011 (4/07).

BEXHILL TO HASTINGS LINK ROAD

Figure : 3A.47	Scale	1 : 500 @ A3
Drawing Title: CROSS SECTIONS	Sheet	2 of 5
	Revision	

Carden Dwyer (Rong Rhons), DepTrans, DMS, MHT MLT Assistant Director, Transport & Waste County Hall, St. Anne's Crescent, Lewes, East Sussex BN1 1UE Telephone: 01273 491000

Transport & Environment

